



## IPASS

Instrument Performance Analysis Software System

AMS recently acquired exclusive rights to distribute and maintain the Instrument Performance Analysis Software System (IPASS), which is a custom-designed application used to analyze instrument calibration data from nuclear power plants.

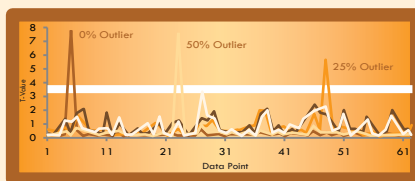
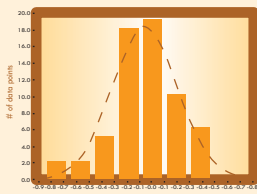
### About

IPASS automates and streamlines the process of analyzing a variety of calibration data including As-Found As-Left (AFAL) data, set point trip data, and RTD cross-calibration data. IPASS is capable of storing, evaluating, tracking, and trending AFAL instrument calibration data and RTD cross-calibration data.

AMS developed the IPASS software for the Windows 7/XP platforms under its 10CFR Appendix B Software Quality Assurance program.

AMS also offers a services-based option that allows plants to upload their AFAL records to AMS for storage, trending, and reporting.

STATISTIC	0%	25%	50%	75%	100%
SAMPLES	63	63	63	64	32
MEAN	-0.035	-0.044	-0.333	-0.021	-0.019
MEDIAN	-0.050	-0.050	-0.025	-0.025	-0.025
STANDARD DEVIATION	0.272	0.249	0.256	0.216	0.276
95/95 TOLERANCE INTERVAL	0.635	0.581	0.597	0.505	0.645



### Benefits

- Monitor the Long Term Performance of Important Process Instruments
- Enter and Store Historic As-Found As-Left (AFAL) Calibration Data
- Perform AFAL Statistical Analysis to Characterize Instrument Drift
- Determine Tolerance Intervals for Instrument Drift
- Enter, Store, and Evaluate Cross-Calibration Temperature Measurements for RTDs
- Determine Measurement Deviation For RTDs
- Identify Out-of-Calibration Data Points
- Generate Standard Reports for AFAL Calibration Data, Instrument Drift Statistics, Outlier Screening, and Normality Checks

For more information please contact:

Dan Beverly (Chief Technical Officer)  
Extension: 112 Email: dan@ams-corp.com

Darrell W. Mitchell (Technical Services Manager)  
Extension: 108 Email: darrell@ams-corp.com

Analysis and Measurement Services Corporation

AMS Technology Center  
9119 Cross Park Drive  
Knoxville, TN 37923, USA

TEL 865 691 1756  
FAX 865 691 9344

EMAIL info@ams-corp.com  
WEB www.ams-corp.com

✱ 10CFR50 Appendix B Program

2014 © AMS CORPORATION